

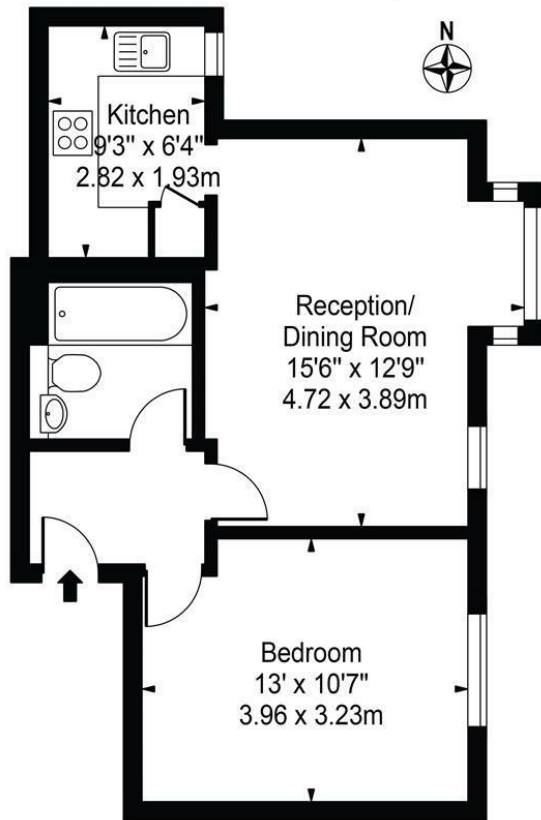


Redwood Gardens, Chingford, E4 7NZ

PER MONTH
£1,350 Per Month

 Coultons

Redwood Gardens, E4 7NZ
 Approx. Gross Internal Area 454 Sq Ft - 42.18 Sq M



First Floor

For Illustration Purposes Only - Not To Scale

This floor plan should be used as a general outline for guidance only and does not constitute in whole or in part an offer or contract. Any intending purchaser or lessee should satisfy themselves by inspection, searches, enquiries and full survey as to the correctness of each statement. Any areas, measurements or distances quoted are approximate and should not be used to value a property or be the basis of any sale or let.



Agents Note: Whilst every care has been taken to prepare these particulars, they are for guidance purposes only. All measurements are approximate and are for general guidance purposes only and whilst every care has been taken to ensure their accuracy, they should not be relied upon and potential buyers/tenants are advised to recheck the measurements

Energy Efficiency Rating		Current	Potential
<i>Very energy efficient - lower running costs</i>			
(92 plus) A			
(81-91) B			
(69-80) C			
(55-68) D			
(39-54) E			
(21-38) F			
(1-20) G			
<i>Not energy efficient - higher running costs</i>			
England & Wales		76	80
		EU Directive 2002/91/EC	



OFFICE DETAILS

26 Station Road
 North Chingford
 London
 E4 7BE

020 8090 0860
 sales@coultons.co.uk
 www.coultons.co.uk

OFFICE DETAILS

425a Lordship Lane
 Wood Green
 London
 N22 5DH

020 3869 8989
 sales@coultons.co.uk
 www.coultons.co.uk